



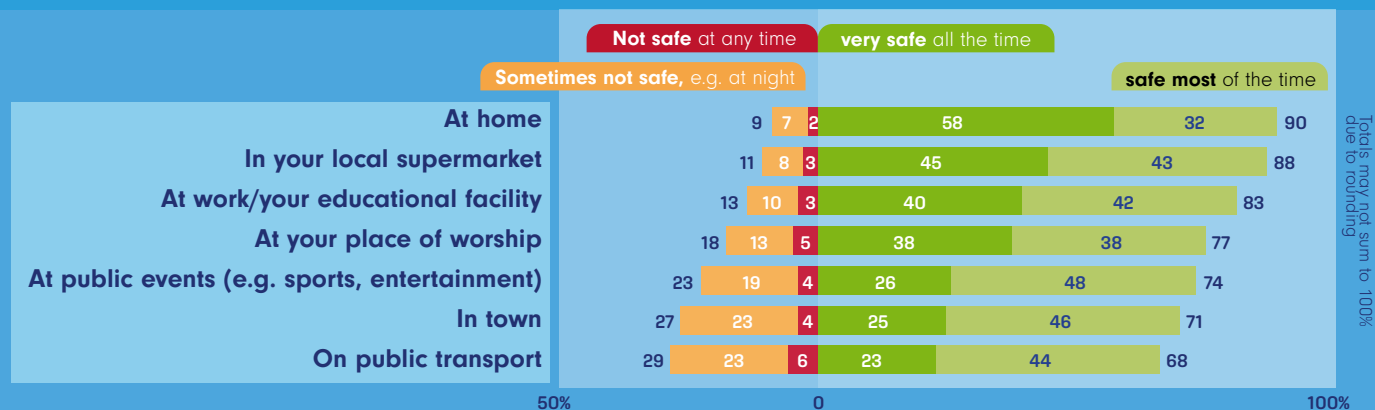
Home, Sweet Home

How safe do we feel at home, and in the wider community?

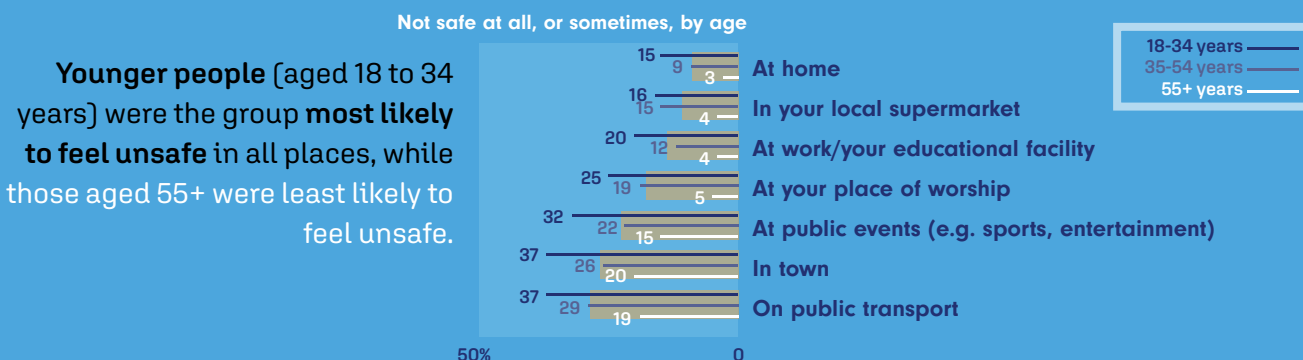


Three months ago our poll results revealed that 94% of New Zealanders reported crime levels in NZ is an important issue to them, including a fifth (20%) who indicated, "It's the most important issue at this time".

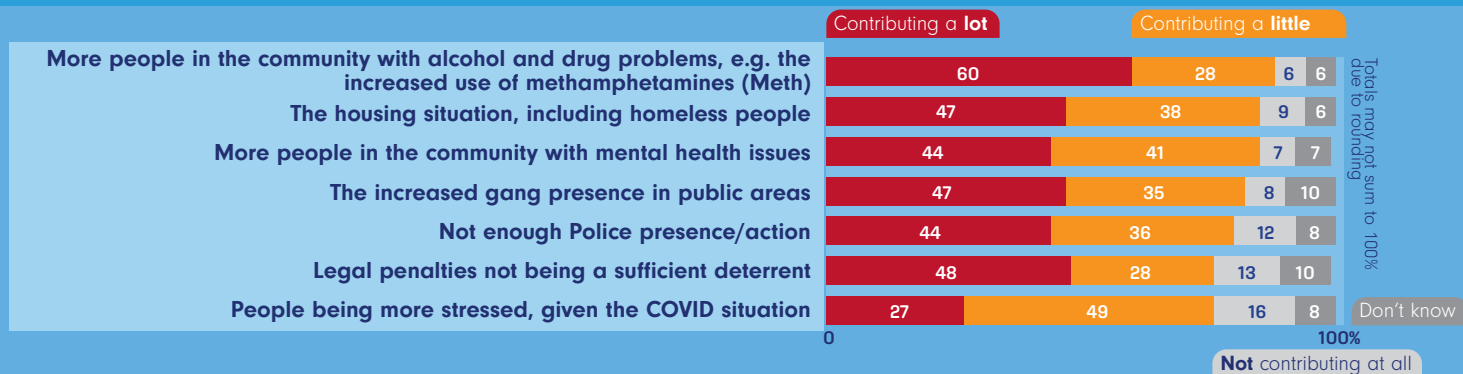
With the recent increase in New Zealanders reporting they have been assaulted/abused or felt unsafe, we asked the public **how safe they personally feel in common places within their community.**



Public places are most frequently identified as the places where people feel the most unsafe ("sometimes"/"always"). Almost three out of ten (29%) reported they feel unsafe on **'public transport'** while about a quarter (27%) feel unsafe **'in town'**, and at **'public events'** (e.g. sports, entertainment events) (23%).



We asked which factors are contributing to more New Zealanders being abused/assaulted or feeling unsafe



When asked which factors they believe are contributing to more New Zealanders being abused/assaulted or feeling unsafe, **'more people in the community with alcohol and drug problems'** was most frequently reported (with 60% saying it **contributed a lot**). Older respondents (aged 55+) were even more likely to report this and most other factors as "contributing a lot".

These results are based on our survey of 1,009 respondents between 15 and 17 May 2021, aged 18 years and over, sourced from Dynata, and conducted online. The maximum margin of error is +/- 3.1% (at the 95% confidence level). The samples have been weighted by gender and age to ensure the results are representative of the population 18 years and over. The survey was not undertaken on behalf of any organisation, but as part of Research New Zealand's social polling of New Zealanders' opinions about current issues.