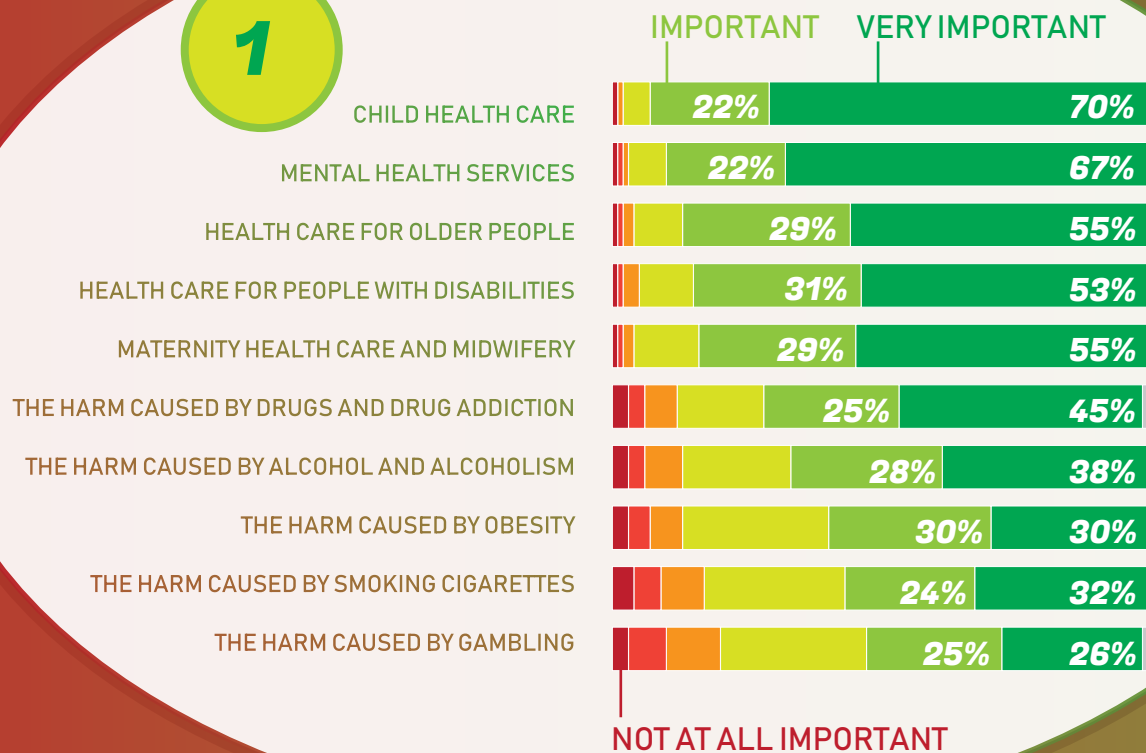


# Healthy priorities

Where we stand on priority areas for the New Zealand health system

**Child health care**, with 92% of respondents rating it as very important or important, and **Mental health services** with 89%, were rated as the two highest priorities for the New Zealand health system. Harm caused by gambling was rated as the lowest priority with just 51% rating it as important or very important.

1



Other high priorities were those for **health care services: older people** (86%), **people with disabilities** (84%) and **maternity health/midwifery** (84%).